



**DEXSION**  
BUILDERS

---

**DEXSION BUILDERS PTE LTD**  
**COMPANY PROFILE**

---

*Structural Construction*







DEXSION BUILDERS PTE PLTD

---

TABLE OF  
CONTENTS



*Company Profile*

---

**INTRODUCTION**

Message from the CEO \_\_\_\_\_ 1

**DEXSION BUILDERS PTE LTD**

History \_\_\_\_\_ 3

Core Values \_\_\_\_\_ 4

Organisation & Management \_\_\_\_\_ 6

Services \_\_\_\_\_ 7

**PROJECTS**

Our Past Projects \_\_\_\_\_ 8

List Of Clients \_\_\_\_\_ 17

**ACCREDITATION**

Our Awards & Achievements \_\_\_\_\_ 18

**CONCLUSION**

Serving You Better \_\_\_\_\_ 19

---

DEXSION BUILDERS PTE PLTD

---

MESSAGE FROM  
THE CEO

•  
*Tey Hong Tat*

---

Dear Stakeholders,

At Dexion Builders, our aim is to build a sustainable relationship with you and deliver long-term value and growth.

Ever since we were founded in 1995, our commitment to our mission and values has not wavered. We started out with several small projects but our dedication and insistence on quality helped us to forge relationships with bigger players. Eventually, we were able to expand our presence to Singapore and Malaysia.

We have since worked with many distinct partners on a multitude of projects. Each project is unique in its own set of requirements, which presents its own challenges and ultimately, its resulting satisfaction to us.

I have had the pleasure of working with a committed team, and I believe that our values and teamwork will tide us through this difficult market environment to continue to bring value to our clients and stakeholders.

Sincerely,



Tey Hong Tat, CEO



DEXSION  
BUILDERS

---

## OUR COMPANY HISTORY

---

### Early establishment

In 2003, Hong Tat Iron Work was established in Malaysia to provide metal work services to residential areas. We ventured into this industry because we have a wealth of experience and skills in construction services, as well as the confidence to deliver quality results. In 2010, we decided to extend our services to Singapore and in 2013, we established a new company of our own - **Dexsion Builders**.

When Dexsion Builders was first established, there were only 8 employees. As new entrants who were not yet known in the market, we faced several difficulties such as low revenues and low profits. We also lacked connections in the industry and funds to handle new projects and purchase equipment.

However, at the end of 2013, we were presented with an opportunity to undertake two large projects worth a total of 1.5 million dollars in value. We had only 9 months to complete the project, which seemed like an insurmountable task due to our lack of funds and equipment.

With the help of Hong Tat Iron Work who transported resources and equipment from Malaysia to us, we successfully completed both projects within a frame of 9 months. The completion of these two projects is our largest and proudest achievement thus far.



### About CEO

The CEO of Dexsion Builders built his way up from scratch without any mentors, with only his passion bringing him this far.

With over 20 years of experience, he is highly recognized in the industry and has been to Germany and Thailand for professional training in metal work services. Our workers are also well-trained and have years of experience in the construction industry.

We have high hopes for Dexsion and we plan to expand the company to other parts of South-east Asia by 2025. Since our establishment, we have steadfastly held on to our values of sincerity, and we treat every client and handle every project with sincerity and integrity.

---

## OUR CORE VALUES

---

Our core values guide us on how we behave and make decisions. They shape the culture and define the character of our company.

Essentially, our values can be summarized as follow:

### COMMITMENT

We are committed in ensuring that all our projects are delivered within budget, on time and to clients' satisfaction, without compromising on the work quality and the safety of our colleagues.

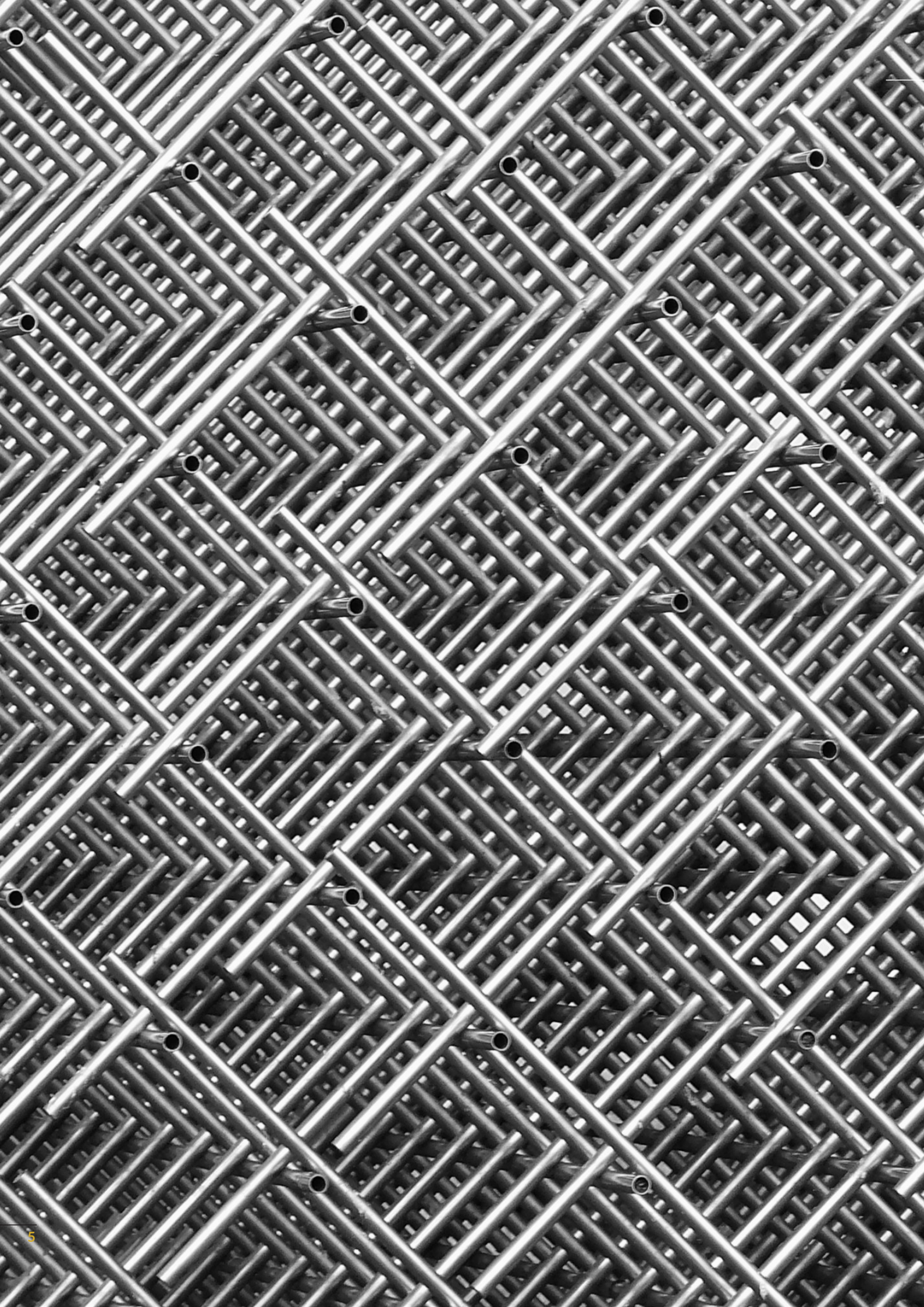
### COMPETENCE

We blend experience with youth to develop a workforce that can deliver high quality work in a capable, efficient and appropriate manner.

### COMMUNICATION

We value frequent communication with our clients, which allows us to anticipate and meet the changing needs of the market, thus delivering a complete solution for our clients.

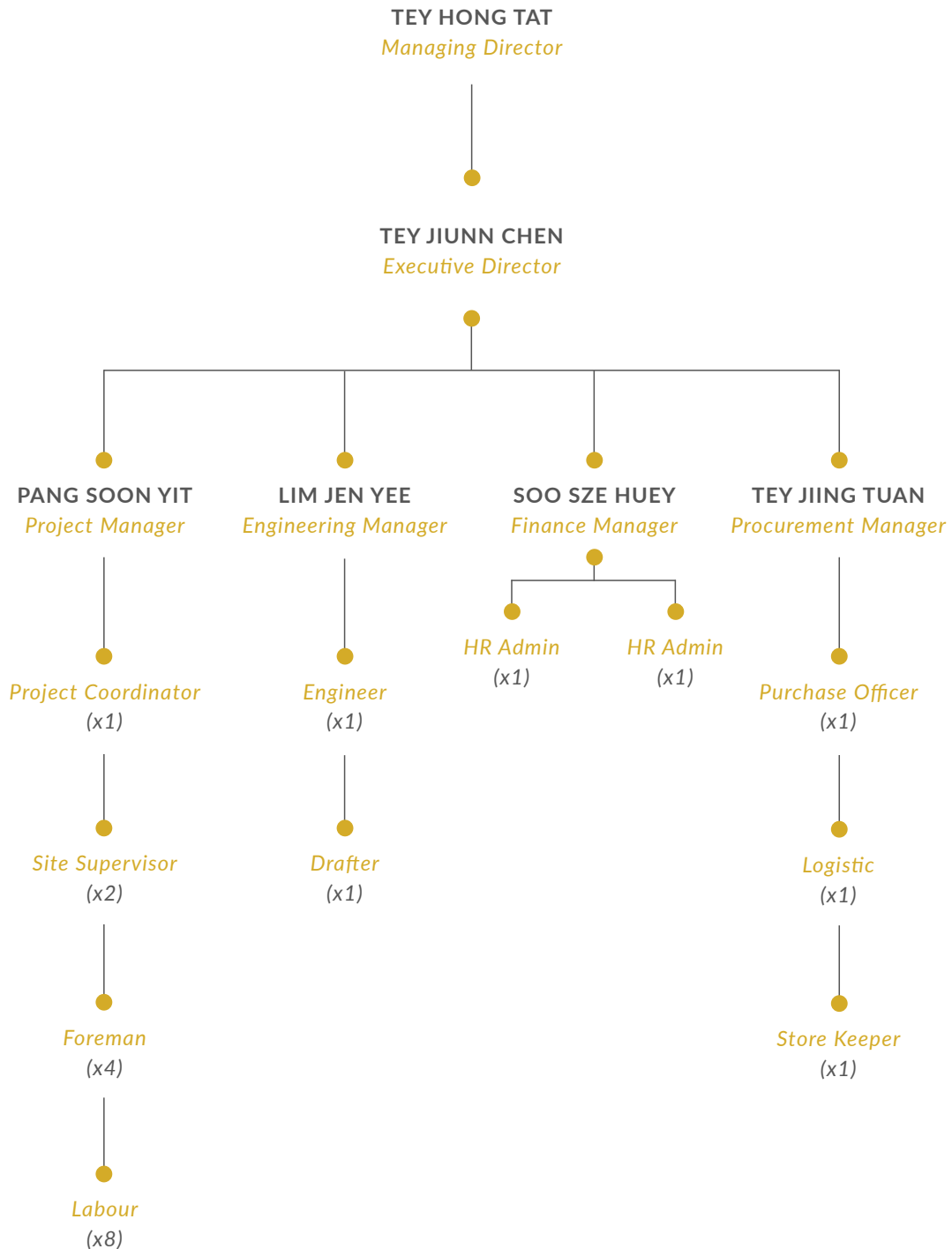




# MANAGEMENT OFFICERS

An overview of Dexsion Builder's organisational structure.

Dexsion Builder's organisational structure comprises the Finance/HR, Project Management and the Project Operation team, which reports directly to the Executive Director.





## OUR SERVICES

---

### STRUCTURAL STEEL

Our main competencies include constructing structural steel frames, as well as the fabrication and installation of universal beams and columns, hollow sections and angle bars.

### FACADE WORKS

We provide facade works of high quality as we consider every aspect such as material, durability, aesthetics, safety, and maintenance.

Our team of experienced engineers ensure perfect enclosure of buildings in all our projects.

### METAL WORKS

We provide metal works, which include drainage gratings, staircase and handicap railings, canopy structures, MS staircases and mezzanine floors.

Our services also include fencing works such as chain link fences, BRC mesh fencing and permanent and temporary hoarding.

### STRUTTING WORKS

We have years of experience in strutting works, offering sturdy and excellent support for construction projects. We ensure that we create a safe environment for our engineers and workers.

# COMPLETED PROJECTS

---

2013-2016 Projects Highlight

---

## OUR PAST PROJECTS

---

2013-2016 Projects Highlight

---

### ANG KEE COLD STORE PTE LTD

---

Supply machinery, powertool and labor to fabricate and install structural steel for Mazzanine.

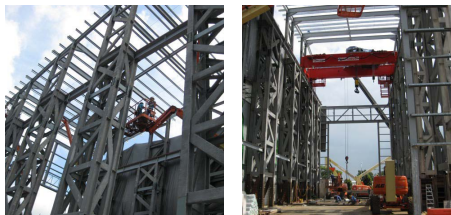
Client: PDCA Pte Ltd  
Location: 220 Pandan Loop  
Category: Structural Steel  
Year: 2013



**CARGOTEC CHS ASIA PACIFIC PTE LTD**

Supply machinery, powertool and labor to fabricate and install structural steel for new heavy duty shelter.

Client: Gee Leng Construction Pte Ltd  
Location: 15 Tukang Renovation Drive  
Category: Structural Steel  
Year: 2013

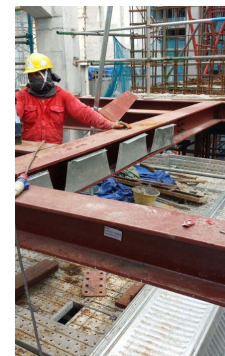
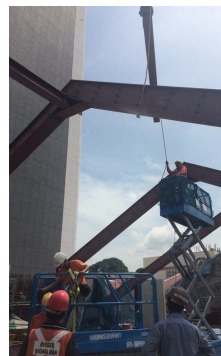




### CAPITOL THEATRE

Supply material, machinery and labor to fabricate and install structural steel for KIOSK type C.

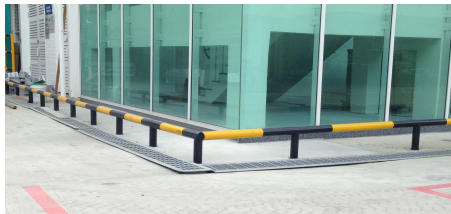
Client: Archilite Engineering Pte Ltd  
Location: 32 Stamford Road  
Category: Metal Works  
Year: 2014



**TAISHI-TECH (S) PTE LTD**

Supply material, machinery and labor to fabricate and install structural steel for extension shelter c/w roofing sheet.

*Client: KNW Builders Contractor  
Location: 19 Senoko Avenue  
Category: Structural Steel, Metal Works and Facade Works  
Year: 2014*





### ES-TEAM LIGHTING PTE LTD

Supply machinery, pwoertool and labor to install structural steel for extension shelter.

Client: DLE Solutions Pte Ltd  
Location: 15 Fourth Lok Yang Road  
Category: Structural Steel  
Year: 2015



**RECLAIMS ENTERPRISE PTE LTD**

Supply material, machinery and labor to fabricate and install structural steel for extension shelter.

Client: Gee Leng Construction Pte Ltd  
Location: 7 Tuas South Avenue 10  
Category: Structural Steel and Facade Works  
Year: 2015





### THE FUTURE OF US - GARDEN BY THE BAY

Supply labor to install structural steel work for new shelter.

Client: DLE Solutions Pte Ltd  
Location: Garden by the Bay  
Category: Structural Steel  
Year: 2016



**SENG HENG ENGINEERING PTE LTD**

Supply material, machinery and labor to fabricate and install structural steel for new shelter c/w roofing sheet.

Client: Gee Leng Construction Pte Ltd  
Location: 29 Joo Koon Circle  
Category: Structural Steel and Facade Works  
Year: 2016



---

## OUR VALUED CLIENTS

---

Since 2013,

We have had the privilege of working with valuable clients who have contributed greatly to our growth and success. We pride ourselves on our commitment to provide quality services to a diverse range of industries and sectors.

We strongly believe our construction expertise, project approach and industry know-how can provide significant value to our clients.

---

**KNIGHT AUTO PRECISION  
ENGINEERING PTE LTD**  
PDCA Pte Ltd

**ASIA PROJECTS  
ENGINEERING PTE LTD**  
CNC General Contractors

**SOON SENG FOOD  
INDUSTRY PTE LTD**  
Beaver Builders Pte Ltd

**KIDZANIA**  
Protag Tetra Resources  
Pte Ltd

**NAM LEONG CO. PTE LTD**  
DLE Solutions Pte Ltd

**LUBRITRADE CONSTRUCTION  
PTE LTD**  
Lubritrade Construction Pte Ltd

**CASH STUDIO FAMILY  
ENTERTAINMENT**  
KNW General Contractor  
Pte Ltd

**U-HOME INTERIOR  
DESIGN SHOWROOM  
(UBI BRANCH)**  
U-Home Interior Design  
Pte Ltd

**NANYANG TECHNOLOGICAL  
UNIVERSITY (NTU)**  
Wong Interior Design &  
Construction Co.



# FUTURE DEVELOPMENTS

---

---

## MOVING FORWARD

---

### *Conclusion*

Against this competitive market landscape, it is imperative that we continue to improve our business model, in order to deliver long-term value and growth to all our stakeholders at Dexsion Builders. We understand that we have to future proof our business in order to remain sustainable in our success.

Since our establishment in 2013, we have steadily built our expertise in the construction and engineering industry, developing and offering various industries and sectors quality construction services.

Moving forward, we will continue to develop and evolve our offerings and quality standards in roofing, metal works and steel to ensure that our clients continue to have positive experiences with us.

Dexsion Builders is also committed in ensuring that various projects are planned and executed smoothly. We do so by continuously training our capable staff and keeping up with changes in technology to remain relevant. We are also in the midst of implementing digital technology in order to reach out to a larger market in the construction industry.

In planning for the future, we wish to reinforce our brand such that our clients can relate to us as a symbol of trust and excellence. We understand that the journey to be future ready has to be truly continuous, and in this journey, we aim to always be guided by our core values - Commitment, Competence and Communication.

I am confident that the Dexsion Builders team will continue to bring satisfaction and value to all stakeholders.



**DEXSION**  
BUILDERS

**DEXSION BUILDERS**

No. 1 Soon Lee Street  
#05 - 11 Pioneer Centre  
Singapore 627605

---

Tel : (+65) 6710 4728  
Fax : (+65) 6710 4729  
E-mail : [general@dexion.com.sg](mailto:general@dexion.com.sg)  
[www.dexion.com.sg](http://www.dexion.com.sg)